



博顺带业
BOSHUN BELTING



高品质输送带 博顺制造
High Quality Conveyor Belts



广东总公司(Head Office)

办公地址: 广东省广州市黄埔区科学城崖鹰石路8号
Office Address : NO.8 YAYINGSHI ROAD, SCIENCE CITY, HUANGPU DISTRICT, GUANGZHOU, GUANGDONG, CHINA
邮编 (Postcode) : 510000
电话(Tel) : 020-82553527 82553537 82553557
传真(Fax) : 020-82553873
邮箱(Email): info@boshunbelt.com Skype:Boshunbelt
网站(Web) : www.boshunbelt.com
工厂地址 : 广东省惠州市博罗县杨侨镇十二岭
Factory Address: TWELVE RIDGE, YANGQIAO VILLAGE, BOLUO COUNTY, HUIZHOU CITY, GUANGDONG, CHINA
邮编 (Postcode): 516100
电话 (Tel) : 0752-6123788
传真 (Fax) : 0752-6123133

下属分公司 (Branch Office)

广州顶顺机电设备有限公司
Guangzhou Dingshun Electrical and Mechanical Equipment Co., Ltd.
电话(Tel) : 020-32366370 32366372
传真(Fax) : 020-32366396

佛山市普斯力工业皮带有限公司
Foshan Persly Industrial Belt Co., Ltd.
电话(Tel) : 0757-82532941 82532942 82564511
传真(Fax) : 0757-82532940

福建分公司 (Fujian Branch)
电话(Tel) : 0595-85026852 85026853
传真(Fax) : 0595-85026853

汕头办事处 (Shantou Office)
电话 (Tel) : 0754-85295977
手机 (Cel) : 13719913118



广东博顺带业有限公司
GUANGDONG BOSHUN BELTING CO.,LTD.

企业简介

ENTERPRISE PROFILE

历史

博顺公司销售输送带始于2005年，公司前身是广州顶顺机电设备有限公司，专业代理销售各类轻型输送带：包括PVC、PE、PU、TPU，以及传动带。2009年由公司出资在无锡承包输送带生产线2条，以高品质的产品赢得市场一致的认可。2012年出资成立广东博顺带业有限公司，占地面积40亩，专业从事轻型输送带的研发、生产、销售，现公司总部设在广州科学城，生产基地位于惠州博罗杨桥镇十二岭。

现状

博顺公司拥有员工：150人，厂房面积近15000平方米，拥有织布机30余台，涂层生产线3条，生产产品宽度从1500mm到3500mm，年生产能力近150万平方米。博顺致力成为国内最好，国际具有竞争力的产品，严格控制各个环节的成本，不断优化产品的组合，促使我们产品性价比更高、质量更好，价格更具有竞争力，我们将大量投入研发和创新上，更使我们一直处在行业的领先地位。

未来

博顺未来，我们将视质量为生命，视诚信为立业之本，开拓创新，锐意进取，不断完善产品质量体系，创品质优良，技术领先的国际一流品牌。

History

- 2005 Guangzhou Dingshun Electrical and Mechanical Equipment Co., Ltd. was set up and started to sell light weight conveyor belts as professional sales agent.
- 2009 Guangzhou Dingshun Electrical and Mechanical Equipment Co., Ltd. invested 2 conveyor belt production lines in Wuxi.
- 2012 Guangdong Boshun Belting Co., Ltd. was set up and built a factory about 27000 square meters in Huizhou city.

Present

Boshun Company has 150 staffs, 30 looms, and 3coating production lines. We produce width from 1500mm to 3500mm. The annual production capacity is nearly 1,200,000 square meters. Boshun is committed to producing the best products in the domestic and overseas. Strict cost control and optimized products give us a more favorable price. By placing a large investment in research and innovation, Boshun believes that we will be in a leading position of light weight conveyor belt industries.

Future

Looking into the future, Boshun will see quality as source of life, uphold the integrity of management, forge ahead, and constantly improve product quality system, committed to be the leading brand in the world.

公司产品

PRODUCTS

博顺目前拥有产品80种以上，可满足不同行业的输送要求，可特殊定制产品超过200种，我们积累了大量输送带使用经验，不断对产品进行优化，使我们的产品价格更具有竞争力，不断根据各个行业特点及使用需要而定制特殊产品，为客户生产出最合适的产品。

Currently, Boshun has over 80 standard products which can meet different industry's conveying requirements, 400 customized products which can be used in different kinds of applications. Boshun has accumulated a lot of experience in the use of conveyor belt. We keep optimizing the products, so as to give our products more competitive prices. What's more, Boshun keeps discovering special products for customers according to their characteristics and using of each industry.

产品展示 Products



高品质输送带·博顺制造
High Quality Conveyor Belts

高品质输送带·博顺制造
High Quality Conveyor Belts

博顺产品目前广泛应用于各个领域，主要行业为：物流、机场、食品、陶瓷、石材加工、木材加工、汽车轮胎、烟草、健身娱乐等行业。通过多年的努力，产品质量不断的提升以及不断创新，目前已成为国内广大客户首选的合作伙伴。

Currently, BoShun belts are widely used in various fields. The main industries are: logistics, airport, food, ceramics, stone processing, wood processing, automobile and steel, tobacco, fitness and etc. Through years of efforts, Boshun has become the preferred partner of our customers.

机场、邮政物流Airport and Logistics

物流行业广泛应用于快递分拣线、机场行李输送。物流行业输送带，要求非常高，所用是一种新型高强度输送带，具有自重轻、弹性好、伸长率小、使用寿命长等特点，其中有平面型、防滑型输送带，具有防静电、耐腐蚀、耐切割、阻燃，在高速运转下输送带不打滑，噪音要低，并且耐高摩擦力。

Logistics industry belts are widely used in express sorting system, airport luggage transportation. The logistic conveyor belts use high intensity material. It has characteristics of light weight, good elasticity, small elongation, long service life and etc. Wherein, the planar and skid resistant belts are anti-static, corrosion-cut resistant, flame resistant, and low noise. It can keep stable under the high speed movement and friction.



陶瓷、石材加工Ceramics and Stone processing

陶瓷、石材行业所用是一种耐磨耐切割、抗拉强度极高、平整度要求较高的输送带，无论从选材到生产到最终产品，都要经过严格的测试，产品中拥有多种表面花纹可供选择，广泛用于大理石、陶瓷生产线上。

Ceramics and stone processing use wear-resistant, cut-resistant, high tensile strength and flatness conveyor belts. They go through many rigorous testing from raw material to the finished products. The belts have a variety of surface patterns to choose, widely used in marble and ceramic production line.



食品Food

食品加工类输送带选用优质的高强度聚酯织物作为带芯，面层用进口PU材料，带体表面具有防粘、耐油、耐酸碱、耐低温、防霉抗菌等特点，产品符合食品卫生标准，可与食品直接接触，无毒，无味。

Food processing conveyor belts use superior quality material. It uses high strength polyester fabric as belt core, imported PU material as surface layer. The surface of the belt body has characteristics of anti-sticking, oil resistance, acid-alkali resistance, low temperature resistance, mildew proof and anti-bacterial. The belts are accord with FDA regulation, can direct contact with food, non-toxic, tasteless.



木材加工Wood

木材加工输送带广泛用于人造板（高、中密度板、纤维板、刨花板等）生产线及木工机械砂光机上。产品特点：抗拉力强、耐磨、平整度要求高。

Wood processing conveyor belts are widely used in artificial board (high, medium density board, fiber board, particle board and others) production line and woodworking mechanical sanding machine. Product features: strong stretching resistance, antifriction, high flatness.



娱乐健身Fitness

娱乐健身行业的皮带，广泛应用于跑步机上，拥有多种厚度和表面花纹可供选择。同时，我们保证带体质量的稳定，做到精度高、防静电、低噪音、使用寿命长。

Boshun conveyor belts are widely used on the treadmill of fitness industry, with a variety of thickness and surface patterns to choose from. Meanwhile, we guarantee the quality of the belt will be stable, high precision, anti-static, low noise, and long service life.



汽车轮胎Automobile

轮胎行业专用输送带，经过特殊处理的聚酯的编织作为承载骨架，单面或双面涂覆PVC或PU作载物面或毯面复合而成，具有强度高、延伸小、曲饶好、工作温度范围宽、运行稳定、使用寿命长等特点。

The Automobile industry special conveying belt, use special polyester woven as bearing skeleton, single-sided or double-sided coated with PVC or PU for loading surface or blanket surface, do have characteristics like high tenacity, low stretch, good flexibility, wide temperature range, stable operation and long service life.



声明：因拍摄原因，部分应用图片来自互联网，仅供参考使用，博顺公司对因此造成的任何后果不负责任。

型号 Type	性能指标 Technical Data												特性Characteristic			
	织物层数 Number of Plies	颜色 Colors	花纹 Patterns	总厚度 Total thickness	涂层厚度 Cover thickness	涂层硬度 Cover hardness	重量 Weight	1%延伸效力 Effective pull at 1% elongation	最小滚轮直径 Min diameter	工作温度 Temperature range	Type of support S=Slide R=Roller T=Trough	输送方式 Type of support	横向稳定性 Lateral stability	防静电 Antistatic	符合欧盟CE认证 CE quality	耐油性 Oil and Fat resistant
			表层/底层 Top/Bottom	mm	表层/底层 Top/Bottom	mm	表层/底层 Top/Bottom	ShoreA	Kg/m²	N/mm	mm	℃	平板 S	滚筒 R	槽型 T	
普通PVC输送带																
10P12-04	1	透明	光滑Smooth	1.0	0.5	80	1.0	4	10	-15/+80	●	●	●		●	
10P12-14A	1	绿	光滑Smooth	1.0	0.5	80	1.0	4	10	-15/+80	●	●	●			
10P12-84	1	蓝	光滑Smooth	1.0	0.5	80	1.0	4	10	-15/+80	●	●	●		●	
17P17-26/4	1	白	小圆点 Round nipple	1.7	1.2	70	1.6	-	-	-15/+80					●	
20P12-11	1	绿	光滑/钻石Smooth Diamond	2.0	0.6/0.9	80/85	1.9	4	30	-15/+80	●	●	●			
13P22-07B	2	-	织物Fabric	1.3	-	-	1.1	8	20	-15/+80	●	●	●			
18P22-07A	2	-	织物Fabric	1.8	-	-	1.7	8	40	-15/+80	●	●	●			
20P21-14/21A	2	绿	光滑Smooth	2.0	0.5	70	2.2	8	30	-15/+80	●	●	●		●	
20P21-34/0	2	黑	哑光Matt	2.0	0.5	80	2.2	8	30	-15/+80	●	●	●			
16P25-14BA	2	绿	光滑Smooth	1.6	0.3	80	1.5	8	30	-15/+80	●	●	●			
20P25-14A	2	绿	光滑Smooth	2.0	0.5	80	2.2	8	40	-15/+80	●	●	●			
20P25-14/21A	2	绿	光滑Smooth	2.0	0.5	70	2.2	8	40	-15/+80	●	●	●	●		
20P25-14/0A	2	绿	哑光Matt	2.0	0.5	80	2.2	8	40	-15/+80	●	●	●			
20P25-24	2	白	光滑Smooth	2.0	0.5	80	2.2	8	40	-15/+80	●	●	●		●	
20P25-34A	2	黑	光滑Smooth	2.0	0.5	80	2.2	8	40	-15/+80	●	●	●			
20P25-34/0A	2	黑	哑光Matt	2.0	0.5	80	2.2	8	40	-15/+80	●	●	●			
20P25-34/0D	2	黑	哑光Matt	2.0	0.5	80	2.2	10	40	-15/+80	●	●	●			
20P25-74A	2	深蓝绿	光滑Smooth	2.0	0.5	80	2.2	8	40	-15/+80	●	●	●			
20P25-74/0Y	2	深蓝绿	哑光Matt	2.0	0.5	85	2.2	8	80	-15/+80	●	●	●			
20P25-84	2	蓝	光滑Smooth	2.0	0.5	80	2.2	8	40	-15/+80	●	●	●		●	●
30P25-05	2	透明	光滑Smooth	3.0	1.2	80	3.3	8	60	-15/+80	●	●	●		●	
30P25-15A	2	绿	光滑Smooth	3.0	1.2	80	3.3	8	60	-15/+80	●	●	●			
40P25-15HA	2	绿	光滑Smooth	4.0	2.2	80	4.6	8	80	-15/+80	●	●	●			
30P25-25	2	白	光滑Smooth	3.0	1.2	80	3.3	8	60	-15/+80	●	●	●			
30P25-35/0A	2	黑	哑光Matt	3.0	1.2	80	3.3	8	60	-15/+80	●	●	●			
30P25-35/0RD	2	黑	哑光Matt	3.0	1.2	80	3.3	10	60	-15/+80	●	●	●	●		
30P25-75A	2	深蓝绿	光滑Smooth	3.0	1.2	80	3.3	8	60	-15/+80	●	●	●			
21P25-14/1A	2	绿	钻石Diamond	2.1	0.6	80	2.0	8	40	-15/+80	●	●	●			
21P25-24/1	2	白	钻石Diamond	2.1	0.6	80	2.0	8	40	-15/+80	●	●	●			
21P25-34/1A	2	黑	钻石Diamond	2.1	0.6	80	2.0	8	40	-15/+80	●	●	●			
50P22-16/3D	2	绿	高摩擦 Rough top	5.0	3.5	55	4.4	10	80	-20/+60	●	●	●			
50P22-16/3RD	2	绿	高摩擦 Rough top	5.0	3.5	35	4.4	10	60	-20/+60	●	●	●			
50P22-36/3D	2	黑	高摩擦 Rough top	5.0	3.5	55	4.4	10	80	-20/+60	●	●	●			
50P22-76/3D	2	深蓝绿	高摩擦 Rough top	5.0	3.5	55	4.4	10	80	-20/+60	●	●	●			
30P22-16/19D	2	绿	直条纹 Straight Stripe	3.0	1.4	55	3.1	10	60	-20/+60	●	●	●			
30P22-36/19D	2	黑	直条纹 Straight Stripe	3.0	1.4	55	3.1	10	60	-20/+60	●	●	●			
24P22-34/24D	2	黑	格子Lattice	2.4	0.9	55	2.4	10	50	-20/+60	●	●	●			
24P22-74/24D	2	深蓝绿	格子Lattice	2.4	0.9	55	2.4	10	50	-20/+60	●	●	●			
56P22-06C	2	透明	大圆台Round Stud	5.6	3.8	70	3.3	8	100	-15/+80	●	●	●	●		
56P22-16CA	2	绿	大圆台Round Stud	5.6	3.8	70	3.3	8	100	-15/+80	●	●	●		●	
56P22-26C	2	白	大圆台Round Stud	5.6	3.8	70	3.3	8	100	-15/+80	●	●	●	●	●	
30P21-11	2	绿	光滑/钻石Smooth Diamond	3.0	0.7/0.8	80/85	3.1	10	80	-15/+80	●	●	●			
30P22-11	2	绿	光滑/钻石Smooth Diamond	3.0	0.7/0.8	80/85	3.1	10	80	-15/+80	●	●	●		●	
30P22-21	2	白	光滑/钻石Smooth Diamond	3.0	0.7/0.8	80/85	3.1	10	80	-15/+80	●	●	●		●	
28P32-07A	3	-	织物Fabric	2.8	-	-	2.9	12	120	-15/+80	●	●	●		●	
90P39-71/15	3	深蓝绿	小高尔夫 Small Golf	9.0	20/20	80	10.5	50	400	-10/+80	●	●				
50P32-24H	3	白	光滑Smooth	5.0	1.8	80	6.0	12	140	-20/+80	●	●	●		●	

型号 Type	性能指标 Technical Data												特性Characteristic				
	织物层数 Number of plies	颜色 Colors	花纹 Patterns	总厚度 Total thickness	涂层厚度 Cover thickness	涂层硬度 Cover hardness	总重量 Weight	1%延伸拉力 Effective pull at 1% elongation	最小滚轮直径 Min diameter	工作温度 Temperature range	Type of support			横向稳定性 Lateral stability	防静电 Antistatic	符合食品级 FDA quality	耐油性 Oil and Fat resistant
					表层/底层 Top/Bottom	表层/底层 Top/Bottom					平板S	滚轮R	槽型T				
普通PVC输送带																	
40P32-14A	3	绿	光滑Smooth	4.0	1.0	80	4.3	12	80	-15/+80	●	●		●			
40P32-24	3	白	光滑Smooth	4.0	1.0	80	4.3	12	80	-15/+80	●	●		●		●	
70P32-36H	3	黑	光滑Smooth	7.0	4.0	55	8.3	14	120	-20/+60	●	●		●			
90P32-36/13	3	黑	菱形格 Grinding Square	9.0	6.0	55	8.5	14	120	-20/+60	●	●		●			
40P32-74A	3	深蓝绿	光滑Smooth	4.0	1.0	80	4.3	12	80	-15/+80	●	●		●			
60P36-76	3	深蓝绿	光滑Smooth	6.0	1.8	75	5.7	40	250	-15/+80	●	●		●			
70P39-76/24	3	深蓝绿	小圆点 Round nipple	7.0	2.0	75	7.3	50	350	-15/+80	●	●		●			
115P39-76/23	3	深蓝绿	凸齿Tooth	11.5	6.5	55	7.5	50	350	-20/+60	●	●		●			
50P32-11	3	绿	光滑/钻石Smooth Diamond	5.0	0.7/0.8	80/85	4.7	14	140	-15/+80	●	●		●			
50P32-21	3	白	光滑/钻石Smooth Diamond	5.0	0.7/0.8	80/85	4.7	14	140	-15/+80	●	●		●		●	
50P42-14	4	绿	光滑Smooth	5.0	1.0	80	5.3	18	180	-15/+80	●	●		●			
90P45-76/25	4	深蓝绿	网眼Low Grip	9.0	2.0	75	10.2	70	450	-15/+80	●	●		●			
耐油PVC输送带																	
10P12-24N	1	白	光滑Smooth	1.0	0.5	65	1.0	4	10	-10/+80	●	●		●		●	●
20P11-21N	1	白	光滑/钻石Smooth Diamond	2.0	0.6/0.9	65/85	1.8	4	10	-10/+80	●	●	●			●	●
18P22-07N	2	-	织物Fabric	1.8	-	-	1.7	8	40	-10/+80	●	●		●		●	●
18P23-07N	2	-	织物Fabric	1.8	-	-	1.7	6	40	-10/+80	●	●	●			●	●
20P25-24N	2	白	光滑Smooth	2.0	0.5	65	2.2	8	20	-10/+80	●	●		●		●	●
20P25-24/0N	2	白	哑光Matt	2.0	0.5	65	2.2	8	20	-10/+80	●	●		●		●	●
21P25-24/1N	2	白	钻石Diamond	2.1	0.6	65	2.0	8	30	-10/+80	●	●		●		●	●
20P25-84N	2	FDA蓝	光滑Smooth	2.0	0.5	65	2.2	8	20	-10/+80	●	●		●		●	●
24P22-24N	2	白	光滑Smooth	2.4	0.7	65	2.7	8	40	-10/+80	●	●		●		●	●
30P25-25N	2	白	光滑Smooth	3.0	1.2	65	3.3	8	50	-10/+80	●	●		●		●	●
30P22-21N	2	白	光滑/钻石Smooth Diamond	3.0	0.7/0.8	65/85	3.1	8	50	-10/+80	●	●		●		●	●
耐油PU输送带																	
8U12-24BA	1	白	光滑Smooth	0.8	0.3	90	1.0	4	8	-20/+80	●	●		●		●	●
15U22-24A	2	白	光滑Smooth	1.5	0.3	90	1.8	8	20	-20/+80	●	●		●		●	●
20U22-24HA	2	白	光滑Smooth	2.0	0.5	90	2.4	8	40	-20/+80	●	●		●		●	●
8U12-14BA	1	绿	光滑Smooth	0.8	0.3	90	1.0	4	8	-20/+80	●	●		●		●	●
15U22-14A	2	绿	光滑Smooth	1.5	0.3	90	1.8	8	20	-20/+80	●	●		●		●	●
20U22-14/A	2	绿	光滑Smooth	2.0	0.5	90	2.4	8	40	-20/+80	●	●		●		●	●
20U22-14/0A	2	绿	哑光Matt	2.0	0.5	90	2.4	8	40	-20/+80	●	●		●		●	●
15U22-84/0A	2	天蓝	哑光Matt	1.5	0.3	90	1.8	8	20	-20/+80							
PVK输送带																	
30PVK100	立体	黑	浸渍布纹 Impregnated Grain	3.0	0.2/0.1	85	3.3	14	80	-15/+80	●	●					
35PVK125	立体	黑	浸渍布纹 Impregnated Grain	3.5	0.2/0.1	85	3.9	18	120	-15/+80	●	●					
38PVK130	立体	黑	浸渍布纹 Impregnated Grain	3.8	0.2/0.1	85	4.2	21	130	-15/+80	●	●					
42PVK150	立体	黑	浸渍布纹 Impregnated Grain	4.2	0.2/0.1	85	4.5	25	150	-15/+80	●	●					

更多产品信息请联系博顺的销售人员或登入公司网站www.boshunbelt.com
Please contact our sales or login in www.boshunbelt.com for more products information.

博顺输送带编号规则

Numbering Rules

20	P	2	5	7	4 / 0	Y	A	
皮带厚度 Thickness	涂层材料 Cover material	织物层数 Number of plies	织物类别 Fabrics category	颜色 Colors	涂层特性 Cover characteristic	花纹 Patterns	织物其他特性 Other fabric characteristic	涂层其他特性 Other cover characteristic

皮带厚度 Thickness

20：代表皮带厚度 Thickness of Belts

涂层材料 Cover Material

P: 聚氯乙烯 PVC

U: 聚氨酯 TPU

织物层数 Number of Plies

- 1: 一层织物One layer of the fabric
2: 二层织物Two layers of the fabric
3: 三层织物Three layers of the fabric

织物类别Fabrics Category

- 0: 高强度涤纶纱织物High Strength Polyester Yarn Fabric
1: 无横向稳定聚酯织物No Lateral Stability of Polyester Fabric
2: 有横向稳定聚酯织物Lateral Stability of Polyester Fabric
3: 聚酯/棉混合织物Polyester/Cotton Blended Fabric
4: 普通涤纶纱织物Ordinary Polyester Yarn Fabric
5: 有横向稳定聚酯织物Lateral Stability of Polyester Fabric
7: 全棉织物All the Cotton Fabrics
8: 有横向稳定高强度聚酯织物Lateral Stability of High Strength Polyester Fabric
9: 无横向稳定高强度聚酯织物No Lateral Stability of High Strength Polyester Fabric
M: 涤纶毛毡Polyester Felt

颜色 Colors

- 0:本色/透明
1: 绿色
2: 白色
3: 黑色
4: 灰色
5: 红色
6: 棕色
7: 深蓝绿色
8: 蓝色
9: 橘黄色

以上颜色仅供参考，请以实物为准。
The above color is for reference only, please in kind prevail.

表面/底面涂层特性Top/Bottom Cover Characteristic

- 1: 正常厚度/钻石花纹Normal Thickness/Diamond Pattern
2: 中等厚度/钻石花纹Medium Thickness/Diamond Pattern
3: 极厚度/钻石花纹Extremely Thickness/Diamond Pattern
4: 正常厚度/织物Normal Thickness/Fabric
5: 中等厚度/织物Medium Thickness/Fabric
6: 极厚度/织物Very Thick Degree of Thickness/Fabric
7: 织物/织物Fabric/Fabric
8: 中等厚度/正常厚度Medium Thickness/Normal Thickness
9: 极厚度/正常厚度Extremely Thickness/Normal Thickness
0: 正常厚度/正常厚度Normal Thickness/Normal Thickness

花纹 Patterns

见花纹示意图 Please refer to the pattern diagram

涂层其他特性 Other Cover Characteristic

- B: 带体比标准薄Thinner than standard
H: 带体比标准厚Thicker than standard
Y: PVC涂层加硬PVC Coating Hardness
R: 涂层加软PVC Coating Softness PVC
N: 具有耐油性Oil and Fat Resistant

织物其他特性 Other Fabric Characteristic

- A: 带导电丝with Conductive Wire
D: 低噪音Low Noise
I : 浸渍织物Impregnated Fabric
G: 横向硬度加强型织Lateral Stability

公司目前生产常用标准花纹，可以满足用户不同的使用环境要求，如有特殊要求的使用，可以定制花纹。
At present, Boshun Company has produced many standard patterns which can meet different requirements according to different using environments. If you have any special pattern requirements, please contact us for customization.



名称：亚光

代码：0

深度：-

宽度：3000mm

特性：表面不粘

行业：通用

Name:Matt

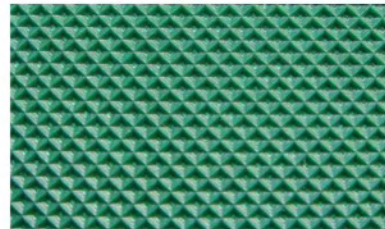
Code:0

Thickness:-

Width:3000mm

Property:Non adhesive surface

Application:General



名称：钻石

代码：1

深度：0.6mm

宽度：3000mm

特性：表面不粘

行业：物流、食品等

Name:Diamond 2mm

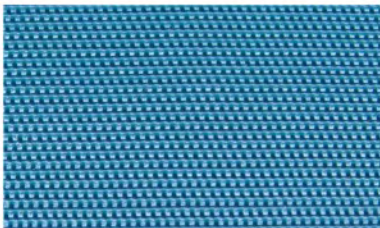
Code:1

Thickness:0.6mm

Width:3000mm

Property:Non adhesive surface

Application:Logistic, Food processing



名称：粗布纹

代码：2

深度：0.3mm

宽度：3000mm

特性：表面不粘，有一定摩擦力

行业：食品、物流

Name:Rough fabric

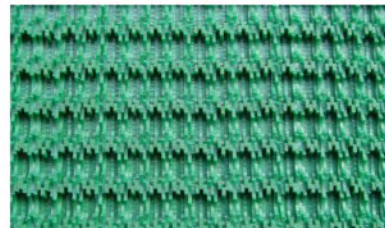
Code:2

Thickness:0.3mm

Width:3000mm

Property:Non adhesive surface

Application:General



名称：高摩擦（草型）

代码：3

深度：2.4mm

宽度：2000mm

特性：表面摩擦大，适用斜面输送

行业：物流、机场等

Name:Rough top(Super grip)

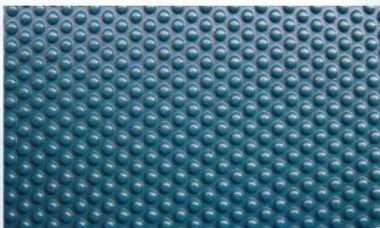
Code:3

Thickness:2.4mm

Width:2000mm

Property:Incline conveying, very high friction

Application:Logistic, Airport



名称：小圆点

代码：4

深度：0.6mm

宽度：2000mm

特性：表面摩擦小

行业：通用

Name:Round nipple

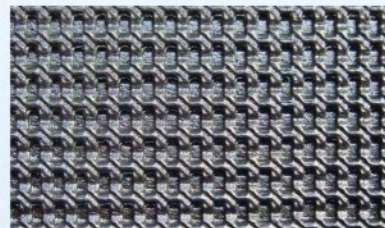
Code:4

Thickness:0.6mm

Width:2000mm

Property:Incline conveying(small angle)

Application:General



名称：粗质地

代码：5

深度：1.6mm

宽度：2000mm

特性：表面摩擦大

行业：物流、跑带等

Name:Coarse texture

Code:5

Thickness:1.6mm

Width:2000mm

Property:Incline conveying, high friction

Application:Logistic, Treadmill belts



名称：锯齿

代码：6

深度：1.5mm

宽度：1450mm

特性：斜面输送

行业：家禽、鱼类加工等

Name:Saw tooth

Code:6

Thickness:1.5mm

Width:2000mm

Property:Incline conveying

Application:Poultry, Sea food processing



名称：细圆台

代码：8

深度：1.3mm

宽度：1450mm

特性：易清洗、适合斜面输送

行业：烟草

Name:Long stud

Code:8

Thickness:1.3mm

Width:1450mm

Property:Incline conveying, easy clean

Application:Tobacco



名称：大人字形

代码：10

深度：3.0mm

宽度：1450mm

特性：斜面传输

行业：农业等

Name:Staggered herringbone

Code:10

Thickness:3.0mm

Width:1450mm

Property:Incline conveying

Application:Agriculture



名称：高尔夫

代码：7

深度：0.8mm

宽度：2000mm

特性：表面摩擦小

行业：物流、跑带等

Name:Golf

Code:7

Thickness:0.8mm

Width:2000mm

Property:Low friction

Application:Logistic, Treadmill belts



名称：波浪形高摩擦

代码：9

深度：2.4mm

宽度：3000mm

特性：表面摩擦大，适用斜面输送

行业：物流、机场等

Name:Wavy Super grip

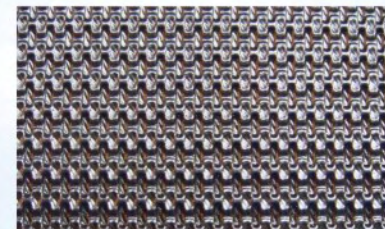
Code:9

Thickness:2.4mm

Width:3000mm

Property:Incline conveying, very high friction

Application:Logistic, Airport



名称：中摩擦

代码：12

深度：1.0mm

宽度：2000mm

特性：表面中等摩擦

行业：物流、跑带等

Name:Mini grip

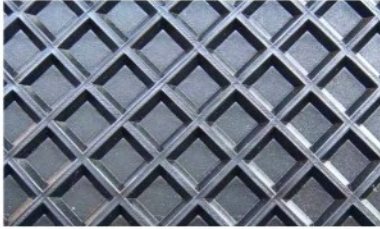
Code:12

Thickness:1.0mm

Width:2000mm

Property:Incline conveying, medium friction

Application:Logistic, Treadmill belts



名称：菱形格

代码：13

深度：3.8mm

宽度：2000mm

特性：-

行业：木材加工

Name:Square 20mm

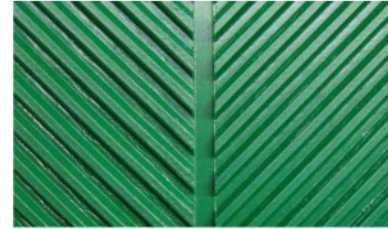
Code:13

Thickness:3.8mm

Width:2000mm

Property:-

Application:Wood processing



名称：鱼骨纹

代码：14

深度：1.8mm

宽度：1450mm

特性：-

行业：木材加工、
鱼类加工等

Name:Fishbone

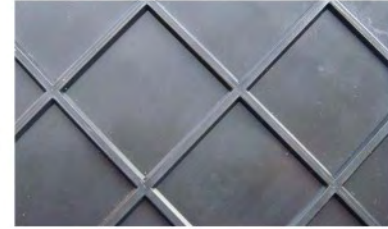
Code:14

Thickness:1.8mm

Width:1450mm

Property:-

Application:Wood, Sea food
processing



名称：大方格

代码：22

深度：4.0mm

宽度：1450mm

特性：-

行业：机场检测

Name:Big square 60mm

Code:22

Thickness:4.0mm

Width:1450mm

Property:-

Application:Airport



名称：凸齿

代码：23

深度：5.0mm

宽度：3000mm

特性：-

行业：石材加工

Name:Tooth(one direction)

Code:23

Thickness:5.0mm

Width:3000mm

Property:-

Application:Marble
processing



名称：小高尔夫

代码：15

深度：0.2mm

宽度：3000mm

特性：表面摩擦小

行业：石材行业压板机带

Name:Small golf

Code:15

Thickness:0.2mm

Width:3000mm

Property:Low friction

Application:Marble processing



名称：浅钻石

代码：17

深度：0.25mm

宽度：1450mm

特性：表面摩擦大

行业：物流、跑带等

Name:Shallow diamond

Code:17

Thickness:0.25mm

Width:1450mm

Property:Very high friction

Application:Logistics,Treadmill belts



名称：格子

代码：24

深度：0.5mm

宽度：3000mm

特性：表面中等摩擦，
适用斜面输送

行业：机场、物流、
无纺布等

Name:Lattice

Code:24

Thickness:0.5mm

Width:3000mm

Property:Incline conveying,
medium friction

Application:Airport, Logistic,
Textile



名称：网眼

代码：25

深度：0.35mm

宽度：2000mm

特性：表面中等摩擦

行业：石材加工

Name:Low grip

Code:25

Thickness:0.35mm

Width:2000mm

Property: Medium friction

Application:Marble processing



名称：细直条

代码：19

深度：0.7mm

宽度：2000mm

特性：易清洗、适用斜面输送

行业：物流、机场等

Name:Longitudinal rib

Code:19

Thickness:0.7mm

Width:2000mm

Property:Incline conveying,
easy clean

Application:Logistic, Airport



名称：草皮纹

代码：20

深度：0.2mm

宽度：2000mm

特性：-

行业：跑带

Name:Leather

Code:20

Thickness:0.2mm

Width:2000mm

Property:-

Application:Treadmill belts



名称：人字形

代码：27

深度：1.8mm

宽度：2000mm

特性：易清洗、适用
斜面输送

行业：烟草

Name:Staggered stud

Code:27

Thickness:1.8mm

Width:2000mm

Property:Incline conveying,
easy clean

Application:Tobacco



名称：横圆台

代码：28

深度：3.0mm

宽度：1450mm

特性：-

行业：木材加工

Name:Capsule stud

Code:28

Thickness:3.0mm

Width:1450mm

Property:-

Application:Wood processing



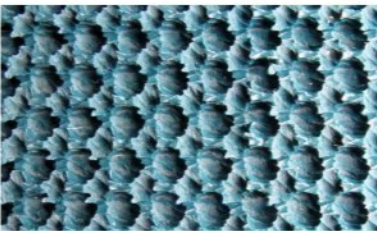
名称：小菱形格
 代码：29
 深度：0.5mm
 宽度：3000mm
 特性：-
 行业：通用

Name:Small rhombus
 Code:29
 Thickness:3.0mm
 Width:3000mm
 Property:-
 Application:General



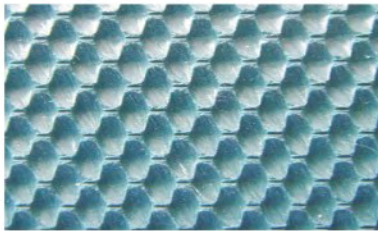
名称：粗砂型
 代码：31
 深度：0.2mm
 宽度：2000mm
 特性：表面不粘，有一定摩擦力
 行业：物流、跑带、包辊材料等

Name:Sandblast
 Code:31
 Thickness:0.2mm
 Width:2000mm
 Property:Non adhesive surface,medium friction
 Application:Logistic,Treadmill belt, Roller wrapping



名称：高摩擦布纹
 代码：45
 深度：3.5mm
 宽度：2000mm
 特性：表面抓力大、耐磨性好
 行业：物流、包装

Name:Super grip fabric
 Code:45
 Thickness:3.5mm
 Width:2000mm
 Property:Incline conveying, very high f riction
 Application:-



名称：中摩擦布纹
 代码：48
 深度：0.8mm
 宽度：3200mm
 特性：表面耐切、与高尔夫花纹类似
 行业：物流、机场等

Name:Mini grip fabric
 Code:48
 Thickness:0.8mm
 Width:3200mm
 Property:Cut resistant surface
 Application:Logistics,Airport



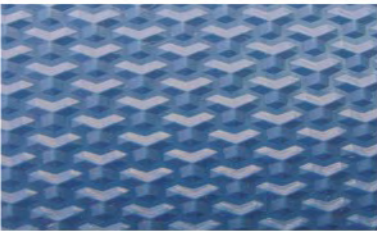
名称：横条
 代码：32
 深度：2.0mm
 宽度：1200mm
 特性：同步输送（需与辊筒配合）
 行业：-

Name:Cross rib
 Code:32
 Thickness:2.0mm
 Width:1200mm
 Property:Timing conveying (With proper roller)
 Application:-



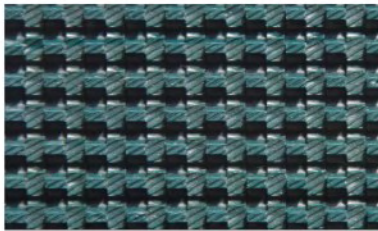
名称：粗亚光
 代码：33
 深度：0.1mm
 宽度：2000mm
 特性：表面不粘
 行业：通用

Name:Rough matt
 Code:33
 Thickness:0.1mm
 Width:2000mm
 Property:Non adhesive surface
 Application:General



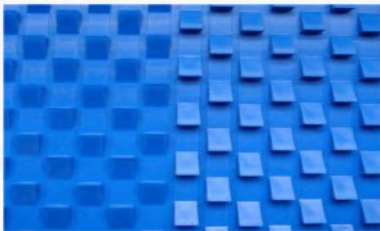
名称：小三棱
 代码：49
 深度：0.6mm
 宽度：2200mm
 特性：表面抓力大
 行业：石材加工

Name:Y pattern
 Code:49
 Thickness:0.6mm
 Width:2200mm
 Property:Very high friction
 Application:Marble processing



名称：高摩擦颗粒
 代码：50
 深度：3.0mm
 宽度：2000mm
 特性：表面抓力大、耐冲击、适合斜面输送
 行业：物流

Name:Super grip(square nipple)
 Code:50
 Thickness:3.0mm
 Width:2000mm
 Property:Very high friction,Impact resistant,Incline conveying
 Application:Logistics



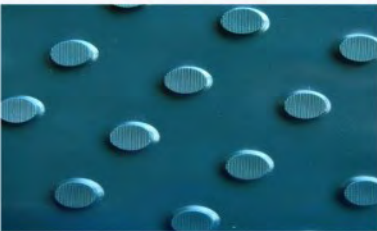
名称：双向凸齿
 代码：34
 深度：5.0mm
 宽度：2200mm
 特性：-
 行业：石材加工

Name:Tooth (two-direction)
 Code:34
 Thickness:5.0mm
 Width:2200mm
 Property:-
 Application:Marble processing



名称：细哑光
 代码：42
 深度：-
 宽度：3000mm
 特性：表面细腻、具有不粘性
 行业：通用

Name:Fine matt
 Code:42
 Thickness:-
 Width:3000mm
 Property:Non adhesive
 Application:General



名称：大圆台
 代码：C
 深度：2.8mm
 宽度：1450mm
 特性：易清洗、适用斜面输送
 行业：烟草

Name:Round stud
 Code:C
 Thickness:2.8mm
 Width:1450mm
 Property:Incline conveying, easy clean
 Application:Tobacco



名称：长圆台
 代码：T
 深度：2.5mm
 宽度：3000mm
 特性：易清洗、适用斜面输送
 行业：烟草

Name:Oval stud
 Code:T
 Thickness:2.5mm
 Width:3000mm
 Property:Incline conveying, easy clean
 Application:Tobacco